

The background of the entire page is a stylized, wavy American flag with red and white stripes and a blue field with white stars.

2013

Diversity Calendar

**Our diversity
makes us stronger**

Each month has links included to view additional information about holidays and observances.

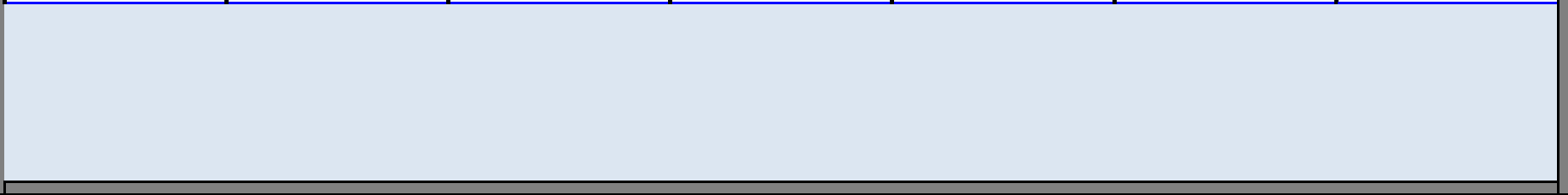


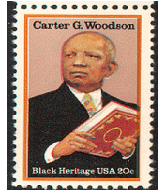
DIVERSITY & INCLUSION

January - 2013



SATURDAY	SUNDAY	MONDAY	TUESDAY	WEDNESDAY	THURSDAY	FRIDAY
			1 New Year's Day	2	3	4
5	6	7	8	9	10	11
12	13	14	15	16	17	18
19	20	21 Martin Luther King Jr. Day	22	23	24 Prophet's Birthday	25
26	27 International Day of commemoration in memory of the victims of the Holocaust	28	29	30	31	





DIVERSITY & INCLUSION

February - 2013



SATURDAY	SUNDAY	MONDAY	TUESDAY	WEDNESDAY	THURSDAY	FRIDAY
AFRICAN AMERICAN HISTORY MONTH						1 National Freedom Day
	2	3	4	5	6	7 8
	9	10 Lunar New Year	11	12	13	14 15
	16	17	18 President's Day	19	20 World Day of Social Justice	21 22
	23	24	25	26	27	28

AFRICAN AMERICAN HISTORY MONTH

Prior to 1925, little information could be found in the US about African American history. A widely held belief existed that African Americans had made little contribution to US society. In 1926, Carter G. Woodson spearheaded the first Negro History Week to raise awareness. Fifty years later, the week was expanded to a month. February was elected because of the birthdays of Abraham Lincoln and Frederick Douglas, two individuals who dramatically affected the lives of African Americans.



DIVERSITY & INCLUSION

March - 2013



SATURDAY	SUNDAY	MONDAY	TUESDAY	WEDNESDAY	THURSDAY	FRIDAY
						1
WOMEN'S HISTORY MONTH	IRISH AMERICAN HERITAGE MONTH					
2	3	4 Kasimir Pulaski Day	5	6	7	8 International Women's Day
9	10	11	12	13	14	15
16	17 St. Patrick's Day	18	19	20 International Day for the Elimination of Racial Discrimination	21	22
23	24	25	26 Passover celebrated 3/26 through 4/2	27	28	29
30	31 Cesar Chavez Day Easter Sunday					

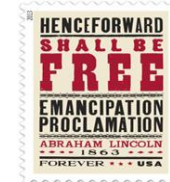
WOMEN'S HISTORY MONTH

On March 8, 1857, garment workers in New York City staged one of the first organized protests by working women. Women's groups internationally have designated times to mark this day. To add women's history into educational curricula, a Women's History Week was initiated in 1978. By 1981, the week was a national event, and in 1987, the National Women's History Project petitioned Congress to include all of March as a celebration of women.

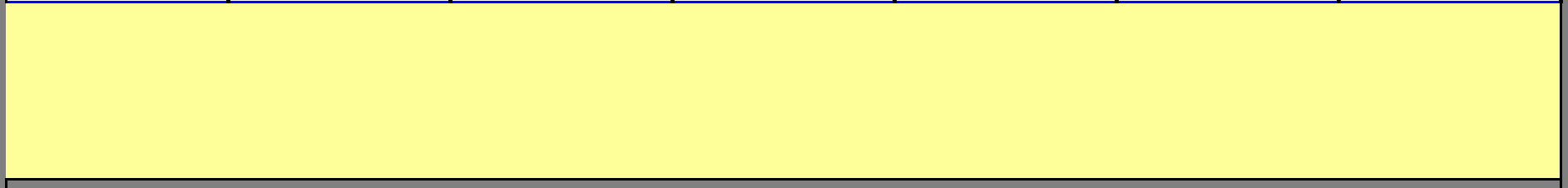


DIVERSITY & INCLUSION

April - 2013



SATURDAY	SUNDAY	MONDAY	TUESDAY	WEDNESDAY	THURSDAY	FRIDAY
		1	2	3	4	5
6 National Tartan Day	7	8	9	10	11	12
13	14	15	16 Emancipation Day	17	18	19
20	21	22 Earth Day	23	24	25	26
27	28	29	30			





DIVERSITY & INCLUSION

May - 2013



SATURDAY	SUNDAY	MONDAY	TUESDAY	WEDNESDAY	THURSDAY	FRIDAY
				1	2	3
JEWISH AMERICAN HERITAGE MONTH	OLDER AMERICANS MONTH	ASIAN AMERICAN AND PACIFIC ISLANDER HERITAGE MONTH				
4	5 Cinco de Mayo	6	7	8	9	10
11	12 Mother's Day	13	14	15 Shavuot	16	17
18	19	20	21	22	23	24
			World Day for Cultural Diversity for Dialogue and Development			
25 Vesak	26	27	28	29	30	31
		Memorial Day				

ASIAN AMERICAN AND PACIFIC ISLANDER HERITAGE MONTH

Generations of Asian Americans and Pacific Islanders have strengthened the US as a nation. Many ethnic groups worked tirelessly to build a national railroad, paving the way for western expansion. The first Asian/Pacific Heritage Week was celebrated in 1979, in response to little recognition of this population during the 1976 bicentennial. By 1990, the celebration was one month long and then made official in 1992.



DIVERSITY & INCLUSION

June - 2013



SATURDAY	SUNDAY	MONDAY	TUESDAY	WEDNESDAY	THURSDAY	FRIDAY
1 NATIONAL CARIBBEAN AMERICAN HERITAGE MONTH	2 LESBIAN, GAY, BISEXUAL AND TRANSGENDER PRIDE MONTH	3	4	5	6 Isra and Mi'raj	7
8	9	10	11	12	13	14 Flag Day
15	16 Father's Day	17	18	19 Juneteenth	20	21
22	23	24	25	26	27	28
29	30					

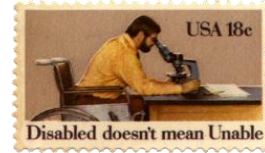
Lesbian, Gay, Bisexual and Transgender (LGBT) Pride Month

Until recently, Pride Days for individuals who are lesbian, gay, bisexual, or transgender (LGBT) were celebrated at many different times all over the US. The most significant date in LGBT history occurring in June was the 3-day protest in 1969 at the Stonewall Inn in New York City, an event that marked the first time that the gay community joined together to fight for its rights, thereby gaining national attention. The anniversary of this event was one of the reasons June was chosen as the nationally proclaimed month to celebrate the LGBT Pride.



DIVERSITY & INCLUSION

July - 2013



SATURDAY	SUNDAY	MONDAY	TUESDAY	WEDNESDAY	THURSDAY	FRIDAY	
			1	2	3	4 Independence Day	5
6	7	8	Ramadan begins	9	10	11	12
13	14	15	Tisha B'Av	16	17	18	19
20	21	22	23	24	25	26 Anniversary of the Americans with Disabilities Act	
27 National Korean War Veterans Armistice Day	28	29	30	31			



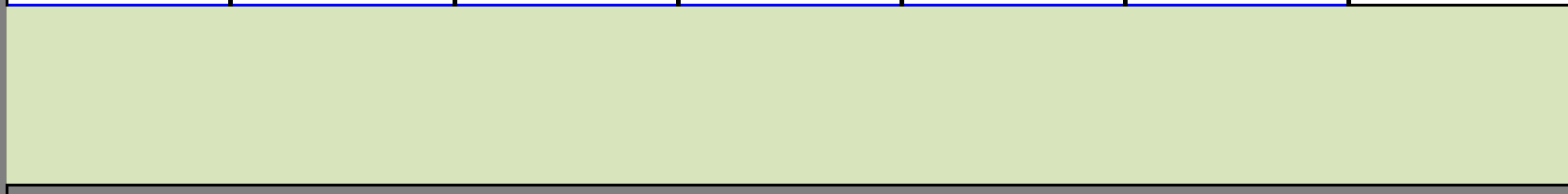


DIVERSITY & INCLUSION

August - 2013



SATURDAY	SUNDAY	MONDAY	TUESDAY	WEDNESDAY	THURSDAY	FRIDAY
						1 2
3 Laylat al-Qadr	4	5	6	7	8 Eid-al-Fitr	9
10	11	12 International Youth Day	13	14	15	16
17	18	19	20	21	22	23
24 Women's Equality Day	25	26	27	28	29	30
31						





DIVERSITY & INCLUSION

September - 2013



SATURDAY	SUNDAY	MONDAY	TUESDAY	WEDNESDAY	THURSDAY	FRIDAY	
		1 Labor Day	2	3	4	5 Rosh Hashana	6
	7	8	9	10	11 Patriot Day	12	13
14 Yom Kippur		15	16	17	18	19 First day of Sukkot	20 National POW/MIA Recognition Day
21	22	23	24	25 Last day of Sukkot	26 Shmini Atzeret/Simchat Torah	27	
28	29	30					

National Hispanic Heritage Month

In 1968, Congress first designated the week including September 15 and 16 as National Hispanic Heritage Week. This week was chosen because of the two historical events: Independence Day (September 15), which celebrates the formal signing of the Act of Independence of Central America in 1821; and Mexico's Independence Day (September 16), which commemorates the beginning of the struggle against Spanish control in 1810. In 1988, Congress expanded the week to a full 31-day period beginning September 15 and ending October 15.



DIVERSITY & INCLUSION

October - 2013



SATURDAY	SUNDAY	MONDAY	TUESDAY	WEDNESDAY	THURSDAY	FRIDAY	
				1	2	3	4
NATIONAL DISABILITY EMPLOYMENT AWARENESS MONTH	ITALIAN AMERICAN HERITAGE MONTH	POLISH AMERICAN HERITAGE MONTH					
5 German American Day	6	7	8	9	10	11	
12	13	14 Columbus Day	15 Eid-al-adha	16	17	18	
19	20	21	22	23	24	25	
26	27	28	29	30	31 Halloween		

National Disability Employment Awareness Month

In 1945, in an effort to assist disabled veterans, Congress designated the first week of October as National Employ the Physically Handicapped Week. In the 1970's, a historic shift in disability public policy occurred. For the first time, the exclusion of people with disabilities was viewed as discrimination. The efforts of disability activists led to significant changes in laws, such as the passage of the Americans with Disabilities Act in 1990 and the designation of a full month to recognize the potential of America's millions of working age people with disabilities.



DIVERSITY & INCLUSION

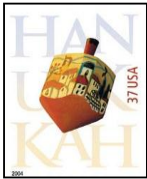
November - 2013



SATURDAY	SUNDAY	MONDAY	TUESDAY	WEDNESDAY	THURSDAY	FRIDAY
	NATIONAL NATIVE AMERICAN HERITAGE MONTH					All Saints' Day 1
2 All Souls' Day	3 Diwali/Deepavali	4	5	6	7	8
9	10 Veterans' Day	11	12	13	14	15
16	17	18	19	20	21	22
23	24	25	26	27 Hanukkah - begins Nov 27 ends Dec. 5th	28 Thanksgiving Day	29
30						

NATIVE AMERICAN HERITAGE MONTH

Since 1900, many have sought to recognize the great influence American Indians have had on the history, cultural development, and continuing growth of the US. Various dates and weeks were acknowledged until 1976, when Congress authorized a week in October as Native American Awareness Week. Finally, in 1990, the month of November was chosen because it is traditionally a time when many American Indians gather for fall harvest festivals, world-renewal ceremonies, and powwows.



3 December
International Day of People with Disability



DIVERSITY & INCLUSION

December - 2013



SATURDAY	SUNDAY	MONDAY	TUESDAY	WEDNESDAY	THURSDAY	FRIDAY
	1	2	3 International Day of Persons with Disabilities	4	5 Hanukkah ends Dec. 5th	6
7	8	9	10 Human Rights Day	11	12	13
14	15	16	17	18	19	20
21	22	23	24	25 Christmas	26 Kwanzaa celebrated 12/26 ends 1/1	27
28	29	30	31			

